

**Bright White (39)**  
CF40 / CF45 / Elite



**White (30)**  
CF40 / CF45



**Bone White (94)**  
CF45 / Elite



**Light Stone (63)**  
CF40 / CF45



**Mocha Tan (22)**  
CF40 / CF45



**Taupe (74)**  
CF40 / CF45 / Elite



**Brown (12)**  
CF40 / CF45



**Burnished Slate (49)**  
CF40 / CF45 / Elite



**Ash Grey (25)**  
CF40 / CF45



**Zinc Grey (29)**  
CF40 / CF45 / Elite



**Charcoal (17)**  
CF40 / CF45 / Elite



**Red (24)**  
CF40 / CF45 / Elite



**Patriot Red (73)\***  
CF45



**Burgundy (15)**  
CF40 / CF45 / Elite



**Fern Green (07) Low Gloss**  
CF45



**Forest Green (26)**  
CF40 / CF45 / Elite



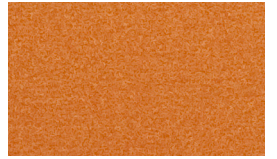
**Hawaiian Blue (70)**  
CF45



**Ocean Blue (35)**  
CF40 / CF45



**Dark Blue (CB4)\***  
CF45



**Native Copper (190)\***  
CF45

CF40 - 40 Year Paint Warranty / Galvalume® Substrate  
CF45 - 45 Year Paint Warranty / G-60 Galvanized Substrate  
Elite - 45 Year Paint Warranty / G-100 Galvanized Substrate



**Black (06)**  
CF40 / CF45 / Elite



**Galvanized (00)**  
Non-Painted Finish - No Warranty



**Galvalume® (41)**  
Non-Painted - 25 Year Warranty

Color selections are close representations but are limited by processing and viewing conditions. Actual samples are available upon request. For all specific warranty, application, installation, and technical information regarding these products contact your local sales representative.

**\*Premium Color - Upcharge will apply**



★ All Colors Meet or Exceed Steep Slope ENERGY STAR® Requirements

**metalsales.us.com**

MS(11R)/5-19

**metal sales**  
manufacturing corporation



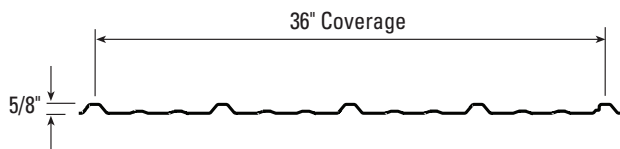
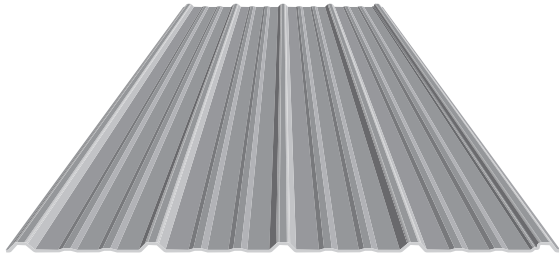
8111 29th Street West  
Rock Island, IL 61201  
800.747.1206 Toll Free  
309.787.1200 Phone  
800.690.6109 Fax



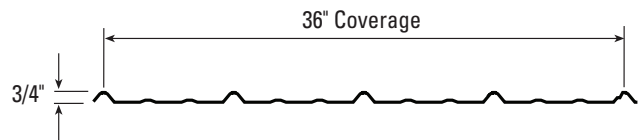
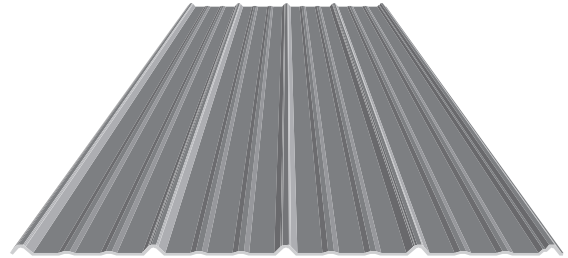
**29 GAUGE**

## POPULAR PANEL PROFILES

**Pro-Panel II<sup>®</sup>**



**Classic Rib<sup>®</sup>**



Other panel profiles are available. Please contact your local branch for more information.

### ADVANTAGES OF METAL ROOF AND WALL PANELS

Hail Impact Resistant • Class A Fire-Resistance Rating\*  
 Energy Star<sup>®</sup> "Cool" Colors • Virtually Maintenance-Free • 100% Recyclable Steel

\*For non-combustible assemblies

## PAINT SYSTEM INFORMATION

### Multiple Layers of Protection

