

**EVALUATION REPORT OF
METAL SALES MANUFACTURING CORPORATION
'29 GA. PRO-PANEL II'**

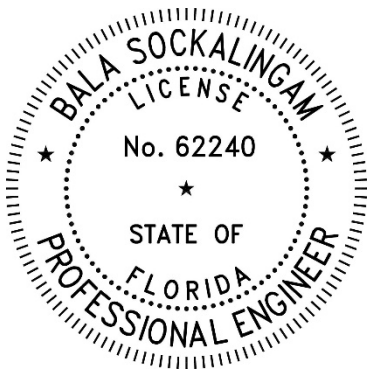
**FLORIDA BUILDING CODE 8TH EDITION (2023)
FLORIDA PRODUCT APPROVAL
FL 46539.2
PANEL WALLS
SIDING**

**Prepared For:
Metal Sales Manufacturing Corporation
7800 Highway 60
Sellersburg, IN 47172
Telephone: (502) 855-4300
Fax: (502) 855-4200**

**Prepared By:
Bala Sockalingam, Ph.D., P.E.
Florida Professional Engineer #62240
1216 N Lansing Ave., Suite C
Tulsa, OK 74106
Telephone: (918) 492-5992**

**This report consists of
Evaluation Report (2 Pages including cover)
Installation Details (1 Page)**

**Report No. C2770-2
Date: 2.20.2024**



This item has been digitally signed and sealed by Bala Sockalingam, PE, on the date indicated.

Printed copies of this document are not considered signed and sealed and this signature must be verified on any electronic copies.

Manufacturer: Metal Sales Manufacturing Corporation

Product Name: Pro-Panel II

Panel Description: 36" wide coverage with (5) 5/8" high ribs

Materials: Min. 29 ga., 80 ksi steel or min. 26 ga., 50 ksi steel Galvanized coated steel (ASTM A653) or Galvalume coated steel (ASTM A792) or painted steel (ASTM A755). Corrosion resistant as per FBC 2023 Section 1405.2.

Sheathings: Min. 15/32" thick plywood sheathing. Fastened to wood supports at maximum 24" o.c. Sheathing and support connections must be designed to resist all loads and installed as per FBC 2023. Water-resistive barrier must be installed over sheathing as per FBC 2023 Section 1403.2 and in accordance with manufacturer's installation procedure.

Design Uplift Pressure: 41.6 psf at fastener spacing of 24" o.c.
(Factor of Safety = 2) 71.5 psf at fastener spacing of 12" o.c.

Panel Attachment:
Type: #9-16 or #10-14 hex head wood screws with sealed washer. Fastener shall be of sufficient length to penetrate through the deck a minimum of 3/8". Fasteners are corrosion resistant as per FBC 2023 Section 1405.17.

At panel ends at 6"-3"-6" o.c. across panel width
At intermediate at 9" o.c. across panel width

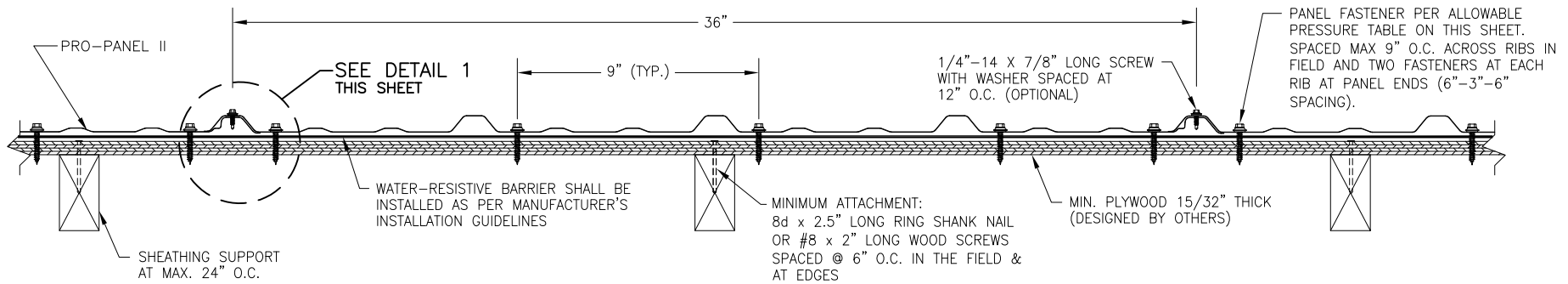
Sidelap Attachment: 1/4"-14 x 7/8" long self-drilling screws with washer at 12" o.c.
(Optional) Fasteners are corrosion resistant as per FBC 2023 Section 1405.17.

Test Standards: Wall assembly tested in accordance with TAS 125-03 'Standard Requirements for Metal Roofing Systems'.

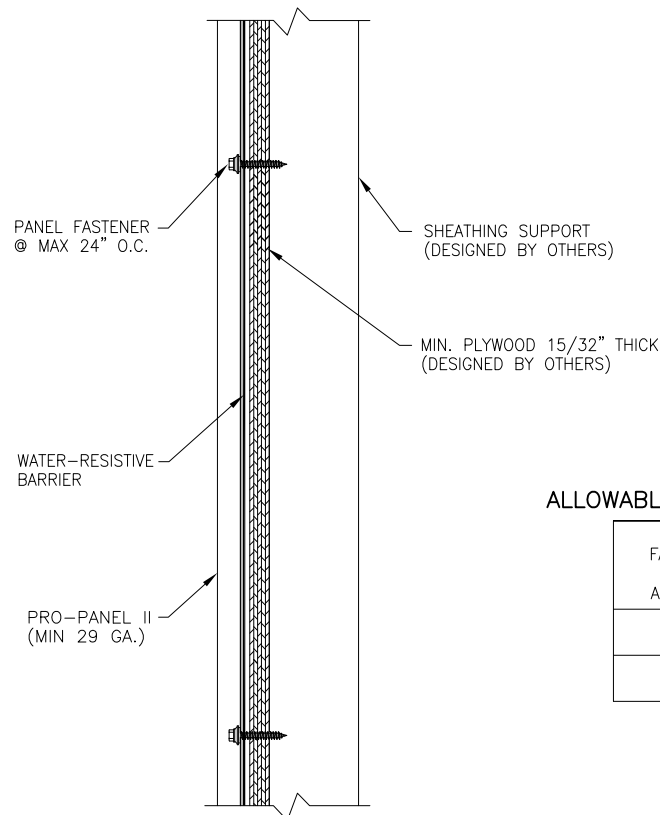
Code Compliance: The product described herein has demonstrated compliance with FBC 2023 Section 1507.4.

Product Limitations: Design wind loads shall be determined for each project in accordance with FBC 2023 Section 1609 or ASCE 7-22 using allowable stress design. The maximum fastener spacing listed herein shall not be exceeded. This evaluation report is not applicable in High Velocity Hurricane Zone.

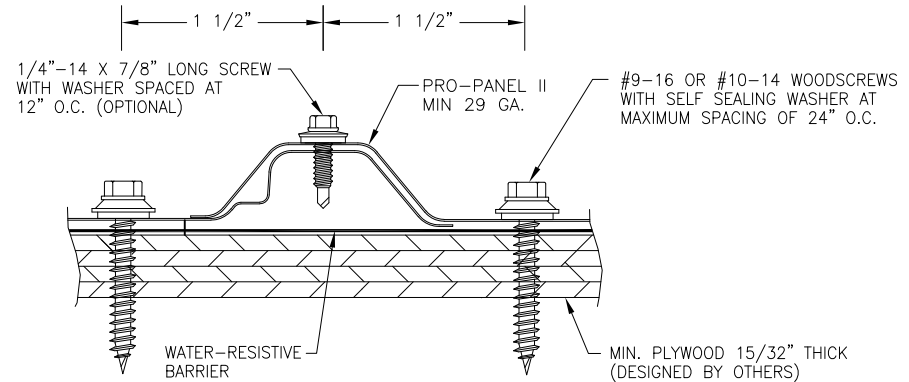
Supporting Documents: TAS 125 Test Report
Farabaugh Engineering and Testing Inc.
Project No. T257-06, Reporting Date 11/14/2006



TYPICAL PANEL INSTALLATION X-SECTION



SECTION VIEW



DETAIL 1

ALLOWABLE OUTWARD PRESSURE

PANEL FASTENERS SPACING ALONG RIB	PRESSURE (PSF)
24"	41.6
12"	71.5

GENERAL NOTES:

1. WALL PANEL HAS BEEN DESIGNED IN ACCORDANCE WITH THE FLORIDA BUILDING CODE (FBC).
2. WALL PANELS ARE SHALL BE MIN 29 GA. ($t = 0.0135"$). EFFECTIVE COVERING WIDTH OF PANEL = 36".
3. WALL PANELS SHALL BE INSTALLED OVER SHEATHING & STRUCTURE AS SPECIFIED ON THIS DRAWING.
4. REQUIRED DESIGN WIND LOADS SHALL BE DETERMINED FOR EACH PROJECT. THIS PANEL SYSTEM MAY NOT BE INSTALLED WHEN THE REQUIRED DESIGN WIND LOADS ARE GREATER THAN THE ALLOWABLE WIND LOAD TABLE.
5. ALL FASTENERS MUST BE IN ACCORDANCE WITH THIS DRAWING & THE FLORIDA BUILDING CODE.
6. WALL SUPPORTS MUST BE DESIGNED TO WITHSTAND WIND LOADS AS REQUIRED FOR EACH APPLICATION AND ARE THE RESPONSIBILITY OF OTHERS.

DRAWN BY: B.S.	CHECKED BY: D.S.
PLOT:	DATE: 2/19/2024
DATE:	
REV.	
DESCRIPTION	
NO.	
PRO-PANEL II MANUFACTURER BALA SOCKALINGAM, PH.D., P.E. CONSULTANTS 1216 N. LANSING AVE., SUITE C TULSA, OK 74106 PHONE: 918-492-5992 FAX: 866-366-1543	
METAL SALES MANUFACTURING CORP. 7800 HIGHWAY 60 SELLERSBURG, IN 47172 502-855-4300	
DRAWING NO. 2770-2	REV.
PAGE NO. 1	OF 1