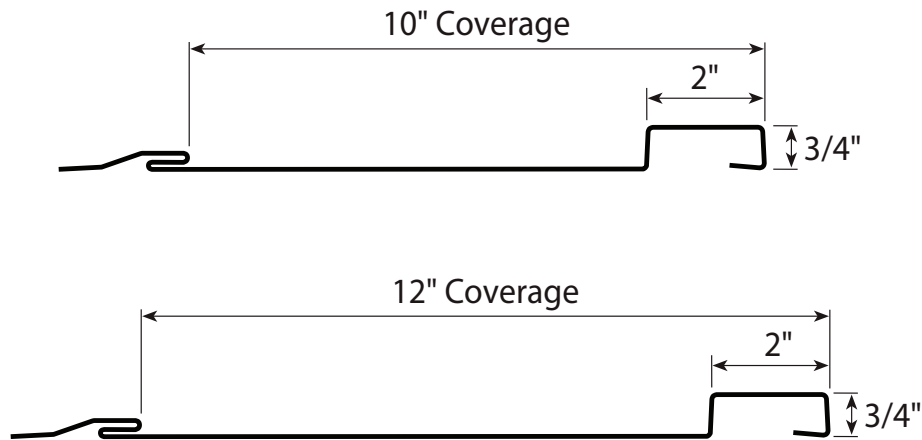


BOARD AND BATTEN

Condensed
Technical
Reference



ARCHITECTURAL
COMMERCIAL
RESIDENTIAL
PANEL

CONCEALED
FASTENERS

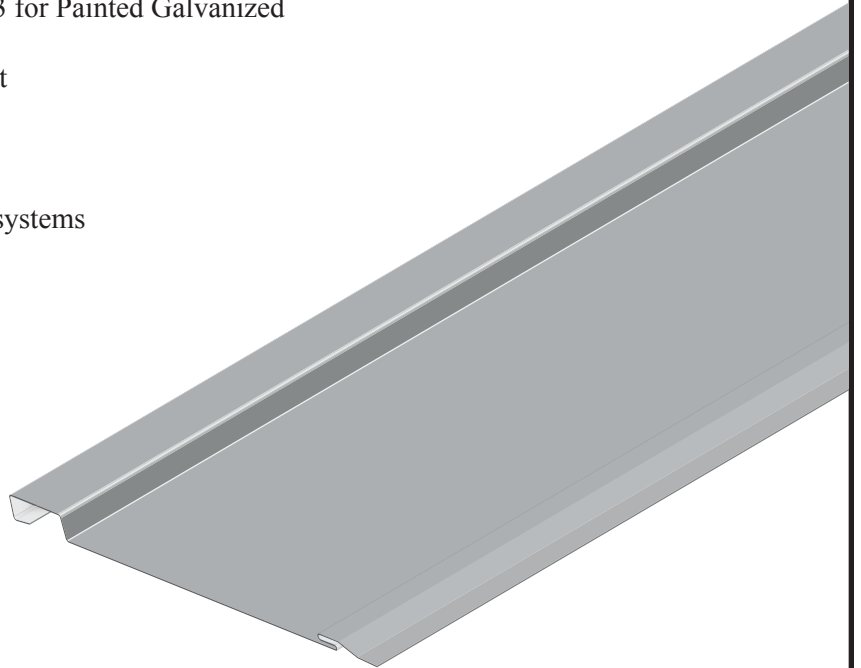
10" & 12"
COVERAGE

WALL AND
LINER PANEL

SOLID
SUBSTRATE

PANEL OVERVIEW

- ▶ Finish: Standard: PVDF and Acrylic-Coated Galvalume®
- ▶ Corrosion Protection: AZ50 per ASTM A 792 for Painted Galvalume®
AZ55 per ASTM A 792 for Acrylic-Coated Galvalume®
G90 per ASTM A 653 for Painted Galvanized
- ▶ Gauges: 24 ga standard
- ▶ 10" or 12" panel coverage, 3/4" panel height
- ▶ Concealed-fastened panel system
- ▶ Panel Length: 5' minimum, 20' maximum
- ▶ Vertical or horizontal application
- ▶ Use on single-skin or field-assembled wall systems



TESTING

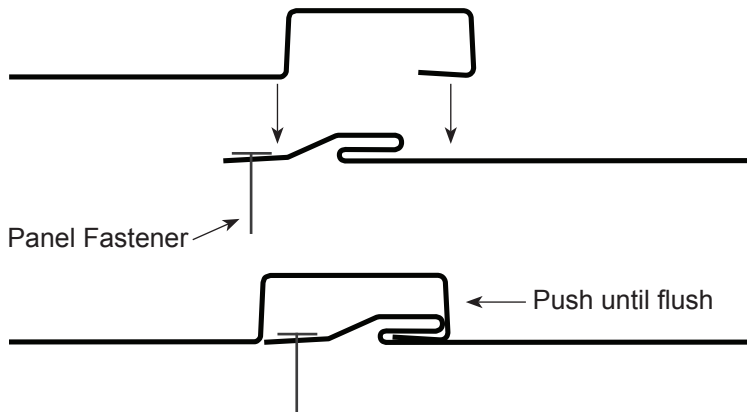
- ▶ ASTM E 283 Air Leakage, with building wrap
- ▶ ASTM E 331 Water Penetration, with building wrap
- ▶ ASTM E 330 Load Test

MS Metal Sales™

BOARD AND BATTEN

**Condensed
Technical
Reference**

PANEL ATTACHMENT



FASTENING INFORMATION

- Clip Fasteners should be driven just to contact between fastener head / clip / panel / support. Overdriven fasteners will cause panel distortions.
- Fasteners should extend 1/2" or more past the inside face of the support material for steel and wood sheathing support materials.
- Clip Fasteners:
 - Attaching to Wood:
 - #12-11 Low Profile Wood Screw
 - Attaching to Steel:
 - < 18 ga: 1/4"-13 Deck Screw
 - ≥ 18 ga, ≤ 12 ga: #10-16 Pancake Head Driller
 - > 12 ga: 1/4"-14 Self Driller, No Washer

INSTALLATION DIRECTION

Horizontally-oriented panels must be installed from the bottom to the top.
Vertically-oriented panels may be installed from the right-to-left or left-to-right.

SECTION PROPERTIES

ALLOWABLE UNIFORM LOADS, psf For various fastener spacings

Ga	Width in	Yield ksi	Weight psf	Top In Compression		Bottom In Compression		Inward Load					Outward Load				
				Ixx	Sxx	Ixx	Sxx										
				in ⁴ /ft	in ³ /ft	in ⁴ /ft	in ³ /ft	2'	3'	4'	5'	6'	2'	3'	4'	5'	6'
24	10	50	1.66	0.0442	0.0538	0.0410	0.0783	43	36	29	22	14	58	47	29	18	13
24	12	50	2.00	0.0635	0.0799	0.0550	0.0966	43	36	29	22	14	58	47	29	18	13

1. Theoretical section properties have been calculated per AISI 2016 'North American Specification for the Design of Cold-Formed Steel Structural Members'. Ixx and Sxx are effective section properties for deflection and bending.
2. Allowable load is calculated in accordance with AISI 2016 specifications considering bending, shear, combined bending and shear and deflection. Allowable load considers the 3 or more equal spans condition. Allowable load does not address web crippling, fasteners, support material or load testing. Panel weight is not considered.
3. Deflection consideration is limited by a maximum deflection ratio of L/180 of span.
4. Allowable loads do not include a 1/3 stress increase for wind.

MS Metal Sales™

metalsales.us.com

Anchorage, AK 866.640.7663
Bay City, MI 888.777.7640
Deer Lake, PA 800.544.2577
Denver, CO 800.289.7663

Detroit Lakes, MN 888.594.1394
Fontana, CA 800.782.7953
Fort Smith, AR 877.452.3915
Independence, MO 800.747.0012

Jacksonville, FL 800.394.4419
Jefferson, OH 800.321.5833
Kelso, WA 800.431.3470
Mocksville, NC 800.228.6119
Nashville, TN 800.251.8508
Rock Island, IL 800.747.1206

Rogers, MN 800.328.9316
Sellersburg, IN 800.999.7777
Sioux Falls, SD 888.299.0024
Spokane, WA 800.572.6565
Temple, TX 800.543.4415
Woodland, CA 800.759.6019